

CASE STUDY



PROJECT DETAILS

Project Name:

Parker Drive Residence

Location:

Muskego, WI

General Contractor:

Achtenhagen Services Inc.
(ASI)

Product Manufacturer:

County Materials
Corporation

Date:

2020

Key Products:

Grand Vantage™ Pavers,
Vantage™ Pavers,
Discover™ Pavers

County Materials' Locally and Readily Available Concrete Pavers Deliver Stunning Results

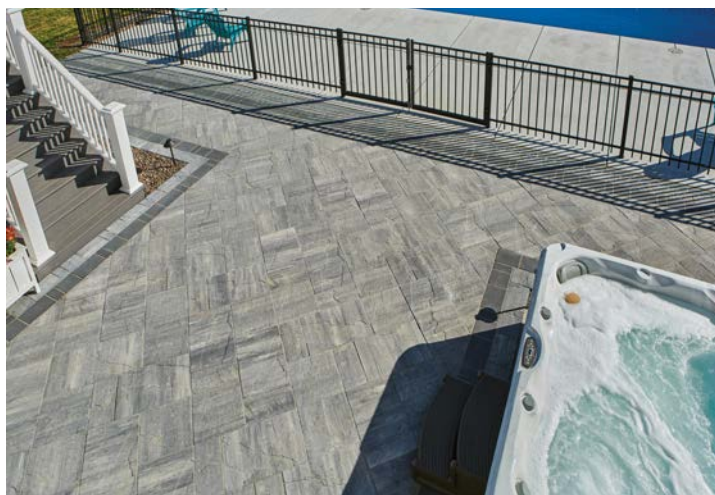
Solutions: Dimensionally compatible concrete pavers achieve one-of-a-kind patio design

The homeowners of this property went on vacation and envisioned coming home to a new, luxurious patio in their backyard. They worked with Achtenhagen Services and County Materials to create a patio design and find concrete landscape products that suited their contemporary style.

The primary goal was to build an expansive patio with separate but cohesive entertainment spaces. County Materials' concrete pavers were specified for their inherent durability, sophisticated aesthetics, and dimensional compatibility.

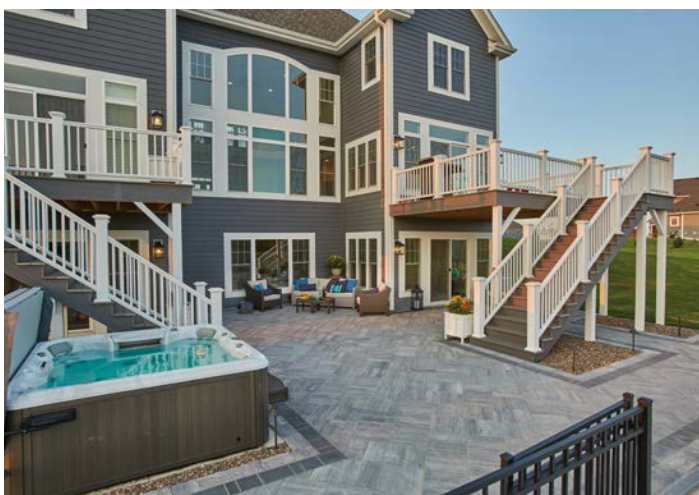
County Materials manufactures concrete pavers using Genesis Face-Mix Technology™. This technology produces an integrally colored, high-strength paver surface that resists stains and freeze/thaw cycles to ensure long-term usage and enjoyment.

Continued on page 2.



Oversized Grand Vantage Pavers in Majestic promoted time and cost savings, covering more square footage in less time than traditional-sized pavers. The pavers' subtle color blend and texture contrasted well with the home's dark gray exterior. Standard-sized Vantage Pavers in Majestic were installed with Discover Pavers in Reflection to create a two-layer solid course that refines and modernizes the space. The pavers' dimensional compatibility helped achieve custom results with greater ease and speed.

County Materials' locally and readily available concrete landscape products were essential in meeting the project's two-week timeline. Once the pavers were on site, three crews worked steadily to lay more than 1,700 SF of concrete pavers within a week. The homeowners were pleased to return to a completed, breathtaking outdoor living space that lived up to their expectations.



County Materials' locally and readily available concrete landscape products were essential in meeting the project's two-week timeline.