

CASE STUDY



PROJECT DETAILS

Project Name:

State Highway 50

Location:

Kenosha, WI

General Contractor:

Musson Brothers, Inc.

Product Manufacturer:

County Materials Corporation

Date:

2020-2021

Key Products:

Reinforced Concrete Pipe, End Walls, Elliptical Pipe, Manholes and Inlet structures

Reinforced Concrete Pipe Proves Most Economical Solution for Kenosha County Highway 50 Expansion

Solutions: Large-scale storm water system expansion; enhanced manufacturing capacity for reinforced concrete pipe and precast concrete structures

Increasing traffic demands in Kenosha County prompted the Wisconsin Department of Transportation to reconstruct nearly 4.5 miles of State Highway 50, from 117th Avenue in Pleasant Prairie to 43rd Avenue in Kenosha. Upon completion, the two-year project will expand the roadway from four to six lanes and further develop its surrounding storm water system.

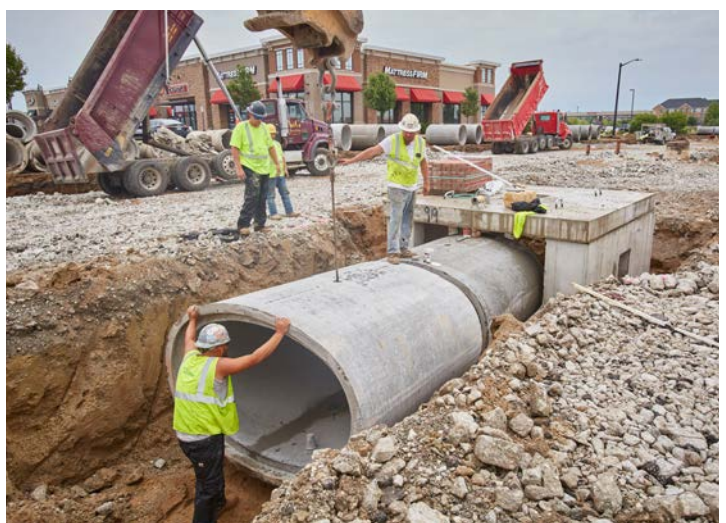
The storm water infrastructure project specified round and elliptical reinforced concrete pipe and precast end walls, manholes, and inlets. Precast concrete was chosen for its reliability and low life cycle cost. Reinforced concrete pipe is a resilient material that resists floatation and continues to strengthen with time. Its precast fabrication ensures low maintenance throughout its extended service life, which can reach and exceed 100 years. The longevity of reinforced concrete pipe and precast concrete structures contributes to unmatched taxpayer value, especially for this extensive storm water system expansion.

Continued on page 2.



County Materials relied on its enhanced production capacity to manufacture 75,000 linear feet of reinforced concrete pipe and 1,200 precast structures. Utilizing three regional facilities, County Materials ensured precast components were produced and delivered to meet the project's construction schedule.

The Kenosha County storm water system expansion will serve the growing community for decades to come. A combination of round and elliptical reinforced concrete pipe was used to provide adequate flow capacity as the area continues to develop.



Utilizing three regional facilities, County Materials ensured precast components were produced and delivered to meet the project's construction schedule.