

## CASE STUDY



## PROJECT DETAILS

**Project Name:**

The Gallery  
Apartments - Burnsville

**Location:**

Burnsville, MN

**Owner:**

Chase Real Estate

**General Contractor:**

Lantz Masonry and All  
Stacked Up Masonry

**Engineer:**

Hanuschak Consultants

**Architect:**

Kaas Wilson Architects

**Product Manufacturer:**

County Materials  
Corporation

**Date:**

2019

**Key Products:**

Concrete Masonry Units,  
Fullface Split

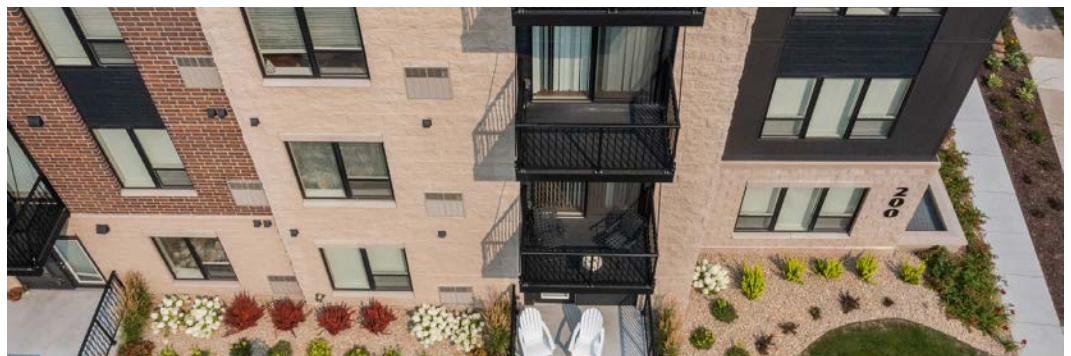
## County Materials' Diverse Concrete Masonry Units Offer Structural and Architectural Solution to Apartment Complex

**Solutions:** Concrete masonry units provide elevated façade solution and demonstrate compatibility with hollowcore plank

The Gallery Apartments offer additional rental options to the Burnsville, MN community. This upscale apartment complex provides tenants an enhanced living experience. Contractors, Lantz Masonry and All Stacked Up Masonry, worked with County Materials to determine structural and decorative masonry solutions for this project.

County Materials' concrete masonry units were used to construct the building's footings. The unmatched strength of concrete provided structural, load-bearing support. Fullface Split veneer units were used on the exterior of the building, offering a chiseled natural stone look. Maintaining their appearance and resisting weathering, the decorative concrete masonry units are a durable alternative to natural stone. Available in oversize units, Fullface Split veneer can maximize construction schedules and reduce labor costs, as the units' larger sizes decrease installation time.

*Continued on page 2.*

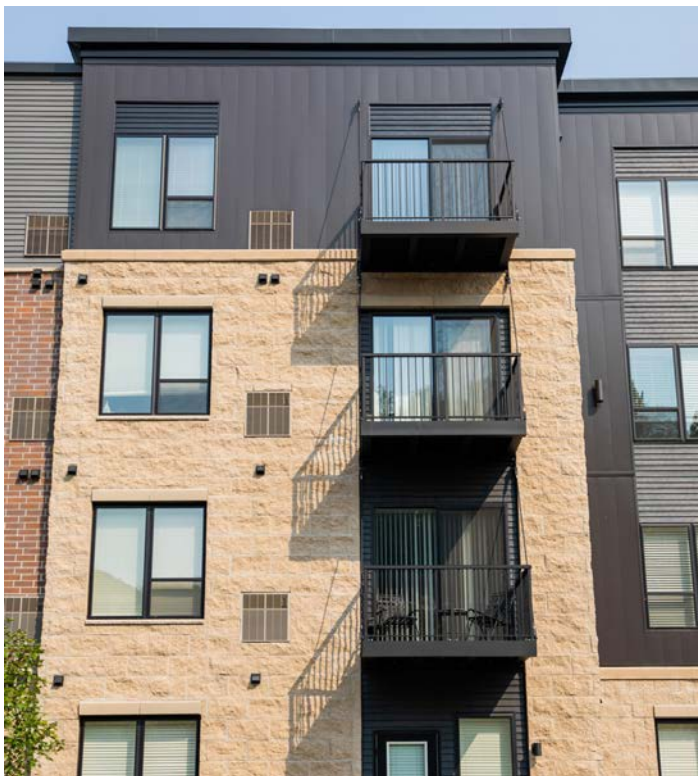






County Materials' concrete masonry units demonstrated their enhanced design flexibility and compatibility, as the complex is clad in multiple veneer materials and its podium was constructed using County Materials Hollowcore.

County Materials' readily available concrete masonry units are offered in a variety of colors, shapes, sizes, and facing options to achieve any desired aesthetic. More than 9,500 SF of masonry units were delivered to meet the project's construction schedule.



//

*Fullface Split veneer units were used on the exterior of the building, offering a chiseled natural stone appearance.*

//

