

CASE STUDY



PROJECT DETAILS

Project Name:

Mile-Long Bridge

Location:

Tri-State Corridor (I-294)
Mile-Long Bridge
Southwest of Chicago

Project Owner:

Illinois State Toll Highway
Authority (ISTHA)

Engineer:

LHQ Tri-State Partners

Erector:

Metropolitan Steel &
Walsh Construction
Company

General Contractor:

F.H. Paschen & Walsh
Construction Company

Product Manufacturer:

County Materials
Corporation

Date:

2019-2021

Key Products:

Prestressed Bridge Girders

County Materials' Prestressed Bridge Girders Provide Long Term Solution for Mile-Long Bridge Project

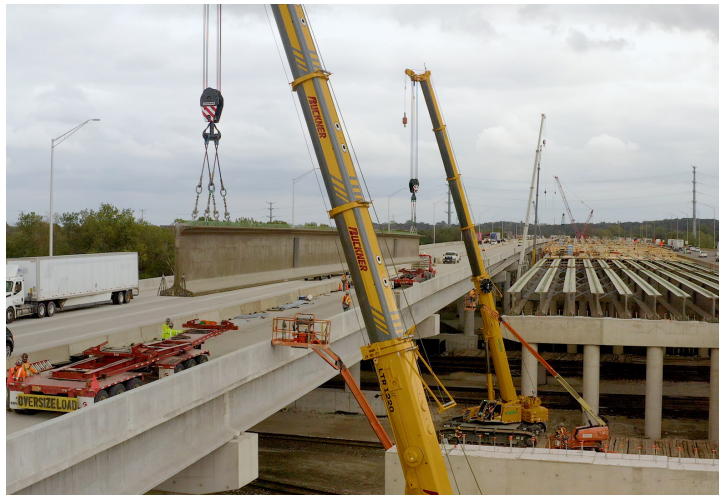
Solutions: Oversized prestressed bridge girders support heavy loads over long spans

The Mile-Long Bridge, southwest of Chicago, IL, is traveled by 150,000 vehicles daily. This 4,800-foot-long structure serves as an essential corridor and spans over two major railroads, three water sources, local roads, and a distribution center. Originally built in 1958, the bridge was designed to efficiently route increasing traffic through the area. As the city began to grow and further develop, the bridge could no longer sufficiently support traffic demands. In the summer of 2019, construction of a new bridge began.

Project leaders relied on County Materials' Prestressed Bridge Girders for their high performance and durability. The new structure was built alongside the existing bridge without further disrupting business operations below. The new northbound and southbound bridges accommodate five lanes of traffic and offer an additional lane for drivers to safely pull over in case of an emergency.

Prestressed girders can withstand live heavy loads and inclement weather. Concrete offers unmatched structural strength and can endure the freeze/thaw cycles of winter weather. The extended service life of prestressed bridge girders can reach up to 100 years. Compared to alternative materials, County Materials' Prestressed Bridge Girders require minimal maintenance, reducing life cycle cost.

Continued on page 2.



County Materials' Prestressed Bridge Girders are preferred for their efficient speed and ease of installation. During production, each prestressed girder is manufactured to specification and arrives ready to be installed upon delivery. Throughout the two-phase project, County Materials manufactured and delivered 523 bridge girders to the project site. Extensive planning was required for successful deliveries. Coordinated delivery plans were shared with four agencies to permit the oversized loads. Each girder required private and state patrol escorts to maintain safe travel for the heavy haul drivers and those around them.



The reconstructed Mile-Long Bridge is expected to open in early 2023. Upon completion, the existing structures will be torn down and the new bridge will serve the Chicago area for decades to come.



//

During production, each prestressed girder is manufactured to specification and arrives ready to be installed upon delivery.

//