

CASE STUDY



PROJECT DETAILS

Project Name:

Interstate 90
Dresbach Bridge

Location:

La Crosse, WI

Owner:

Minnesota Department
of Transportation

General Contractor:

Ames Construction

Product Manufacturer:

County Materials
Corporation

Key Products:

Prestressed Bridge Girders

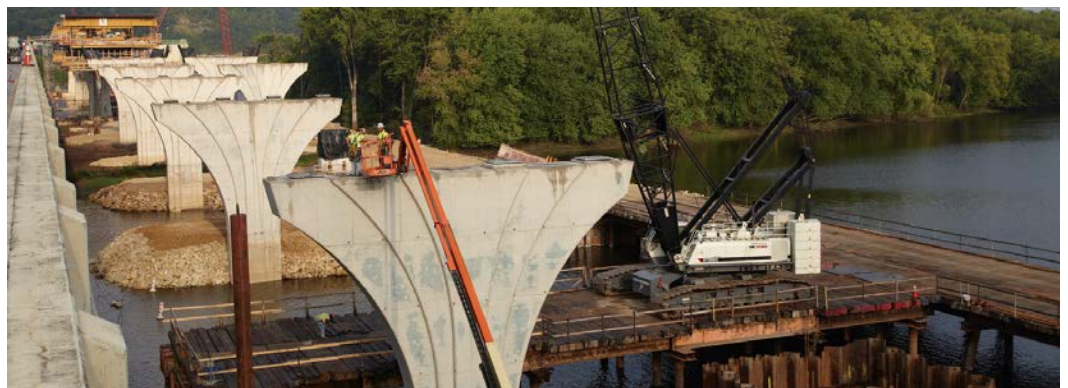
County Materials' Prestressed Bridge Girders Prove Ideal in Mississippi River Bridge Reconstruction

Solutions: Prestressed bridge girders replace outdated steel bridge, increasing safety for motor vehicles

The Interstate 90 Dresbach Bridge in La Crosse, WI spans over the Mississippi River, connecting Wisconsin and Minnesota. The bridge is heavily used by commuters within the region each day. Made of steel, the original bridge was narrow and could no longer support the traffic that crossed it. The Minnesota Department of Transportation sought a durable solution to enhance safety and update the bridge.

County Materials' Prestressed Bridge Girders proved an ideal solution for this project. Prestressed girders are a high-performance material that can support high load capacities and endure freeze/thaw cycles. The MnDOT specified prestressed girders for their extended service life of up to 100 years.

Continued on page 2.





Each prestressed girder was manufactured to specification and ready to be installed upon delivery. The girders' height allowed for longer spans and required fewer support piers in the water, minimizing environmental impact and construction time.

County Materials manufactured and delivered 48 oversized prestressed bridge girders for the Interstate 90 Dresbach Bridge. The reconstructed bridge provides a safer route that the community can rely on for future decades.



//

The MnDOT specified prestressed girders for their extended service life of up to 100 years.

//