

## CASE STUDY



### PROJECT DETAILS

**Project Name:**

Uptown Commons II  
Senior Apartments

**Location:**

Chilton, WI

**Owner:**

Horizon Development  
Group Inc

**General Contractor:**

BCMI Construction

**Product Manufacturer:**

County Materials  
Corporation

**Date:**

2019

**Key Products:**

Heritage Collection™  
Designer Concrete Brick,  
Premier Ultra® Burnished  
Masonry Units, and  
Splitface Concrete  
Masonry Units

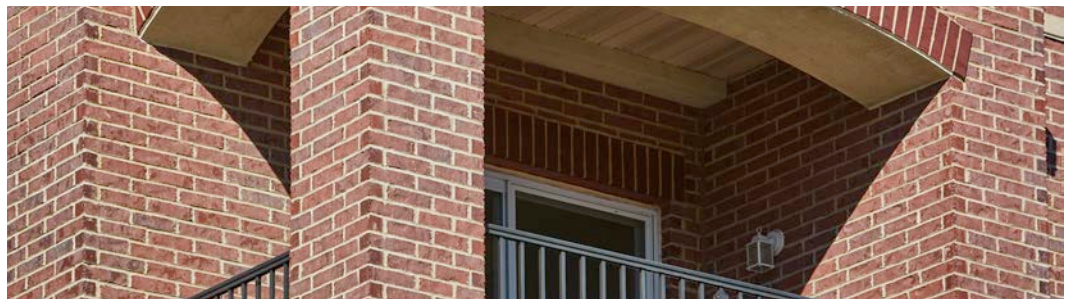
## Senior Living Apartment Complex Transformed with County Materials' Concrete Masonry Units

**Solutions:** Concrete masonry units offer diverse application

The Uptown Commons II Senior Apartments are a 24- unit assisted living apartment complex in Chilton, WI. These apartment homes offer an underground heated parking garage, a community room, and a fitness center. Located along the river, the apartments provide easy access to dining, shopping, and entertainment. To match the aesthetic of the neighborhood, project leaders sought a versatile and durable concrete masonry solution.

County Materials' Heritage Collection Designer Concrete Brick, Premier Ultra Burnished Masonry Units, and Splitface Concrete Masonry Units were used to transform the exterior of the assisted living apartments. With many historic buildings in the area, Heritage Collection units were selected as the predominant building material to complement the surrounding structures. Splitface units form a block wainscot that wraps around the building and becomes more prominent on the building's backside, as the property slopes to reveal additional masonry.

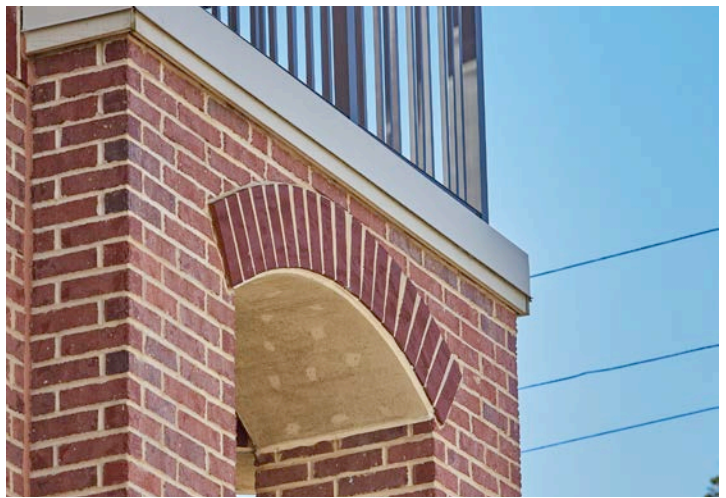
*Continued on page 2.*





County Materials' concrete masonry units are a preferred building material for their inherent durability and resilience. Manufactured to last, the units maintain their appearance and withstand the elements throughout their extended service life. Requiring minimal maintenance, concrete masonry is a cost-efficient material.

Positioned on a sloping property, there was less room for staging during construction. County Materials communicated with BCMI Construction to develop an effective plan for deliveries to the site. More than 14,000 SF of concrete masonry was used to create a façade that leaves a lasting impression.



*With many historic buildings in the area, Heritage Collection units were selected as the predominant building material to complement the surrounding structures.*

