

CASE STUDY



PROJECT DETAILS

Project Name:

1722 Monroe
Street Apartments

Location: Madison, WI**Owner:**

New Year Investments

General Contractor:

Greiber Masonry

Architect:

Potter Lawson/MoTis
Architecture

Product Manufacturer:

Bowerston

Key Products:

Clay Brick

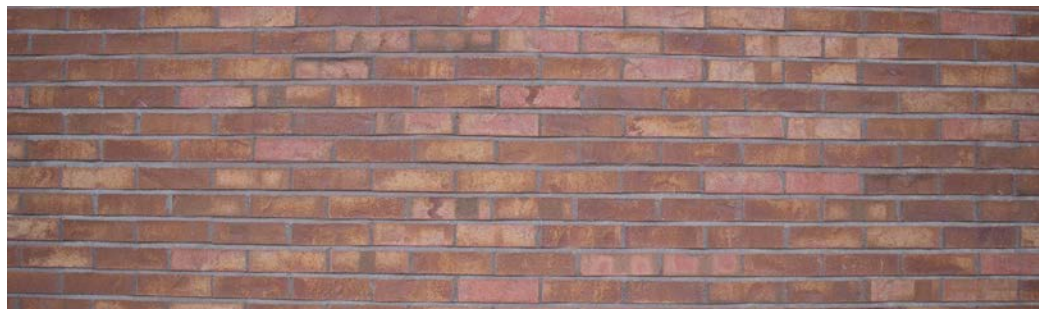
Clay Brick Revitalizes Urban Apartments

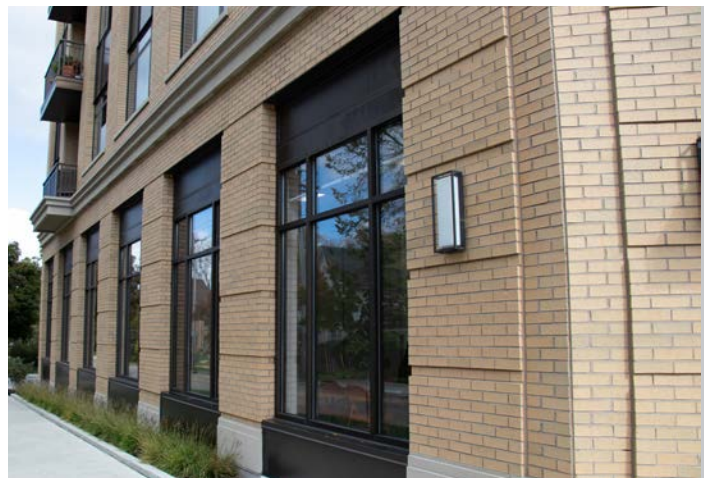
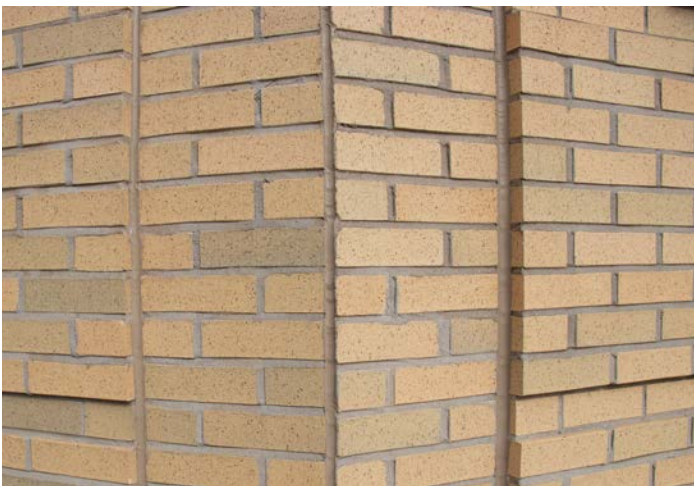
Solution: Clay brick meets design standards

County Materials supplied more than 26,000 SF of clay brick for a mixed-use project in Madison, Wisconsin, that helped meet the neighborhood's needs for retail space and apartments. The 1722 Monroe Street Apartments are in a bustling corridor between college campuses that includes many single-family homes.

The complex has a dimensional façade that features corbeled clay brick in Olde Cheyenne. Clay brick's natural strength and fire resistance have made it a material of choice in urban communities for centuries. The material retains its integrity and value proving a timeless and economical solution. County Materials supplies clay brick in a wide variety of sizes, shapes, and colors for commercial, residential, and institutional structures.

Working with the contractor, County Materials coordinated precise product deliveries to ensure timely completion of the 1722 Monroe Street Apartments.





//

County Materials supplies clay brick in a wide variety of sizes, shapes, and colors for commercial, residential, and institutional structures.

//