

CASE STUDY



PROJECT DETAILS

Project Name:

Edgerton Community Elementary School

Location:

Edgerton, WI

Owner:

Edgerton School District

General Contractor:

JP Cullen

Architect:

Bray Architects

Product Manufacturer:

County Materials Corporation

Key Products:

Heritage Collection™
Designer Concrete Brick

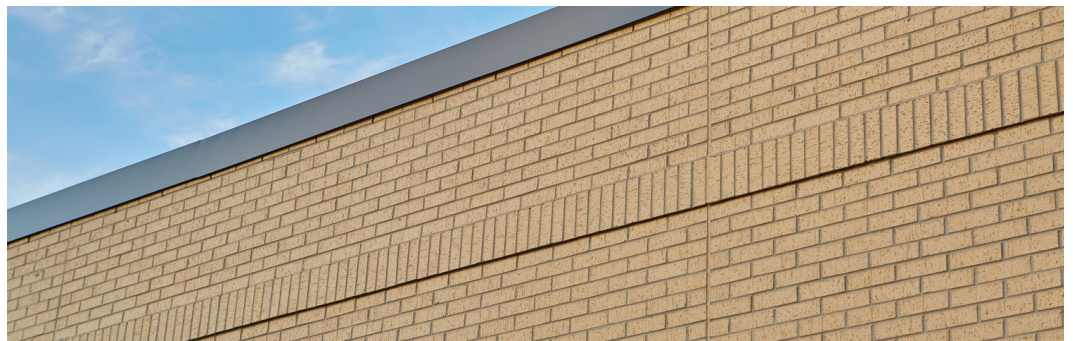
Heritage Collection™ Designer Concrete Brick Proves Ideal for Elementary School Expansion

Solutions: Concrete masonry units offer enhanced durability and extended service life

As its community began to grow, the Edgerton School District proposed a referendum to expand and renovate the Community Elementary School. Working with an accelerated timeline, the school district sought readily available masonry units for the exterior of the building.

County Materials' Heritage Collection Designer Brick proved ideal for the project. The units offer a traditional brick aesthetic with the advantages of concrete masonry. Concrete brick is a durable building material that offers unmatched strength. Heritage Collection units are available as structural load bearing or veneer units, offering greater design flexibility.

Continued on page 2.





Concrete masonry units require low maintenance throughout their extended service life due to their inherent durability. They also offer fire resistance, enhanced indoor air quality, and optimal sound control.

Project leaders relied on County Materials' locally and readily available concrete masonry products to meet the construction timeline. More than 2,500 SF of Heritage Collection Designer Brick was delivered to the elementary school site on schedule, allowing the expansion to be completed within one year.



//

Project leaders relied on County Materials' locally and readily available concrete masonry products to meet the construction timeline.

//