

CASE STUDY



PROJECT DETAILS

Project Name:

North Austin Community Center

Location:

Chicago, IL

Key Products:

Insulated Sandwich Walls

Engineer:

Forefront Structural Engineers, Inc.

Contractor:

ARCO/Murray

Product Manufacturer:

County Prestress

Date:

2021–2022

County Prestress' Insulated Sandwich Walls Elevate Chicago's North Austin Community Center

Solutions: Prestress wall panels specified for enhanced design flexibility and prolonged service life

Through a joint venture of Grace and Peace Church, nonprofit By the Hand Club for Kids, and developer Chicago Neighborhood Initiatives, the City of Chicago's \$31 million North Austin Community Center will be a year-round sports and academic facility providing local youth after-school and athletic opportunities the neighborhood has lacked for years.

The two-story complex will house more than 152,000 SF of indoor space dedicated to sports, education, and wellness, with additional outdoor athletic amenities such as soccer fields, basketball courts, and a walking track. Multipurpose spaces and classrooms will provide after-school programming, mentorship opportunities, and community use.

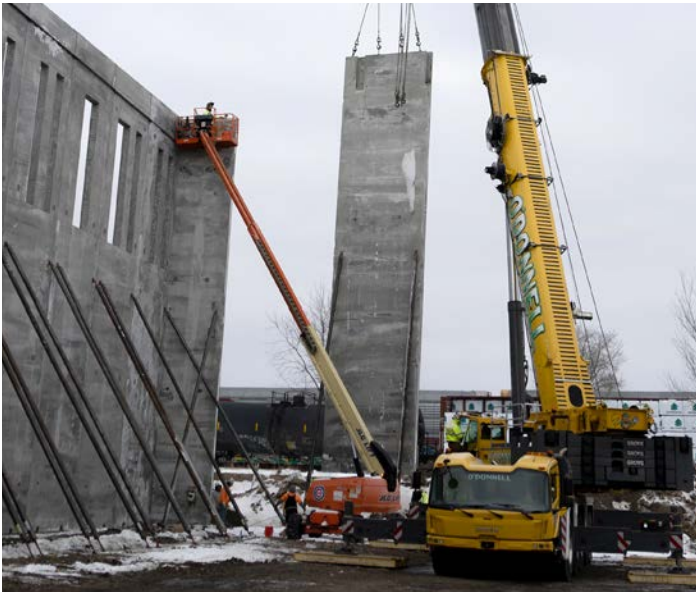
Continued on page 2.





Project planners chose insulated sandwich walls manufactured by County Prestress for their ease of installation and lasting durability. In total, County Prestress delivered 95 12-inch-thick wall panels and 84 10-inch-thick wall panels with gray form finish. The concrete wall panels' thermal mass effectively stores and releases heat, resulting in an energy-efficient structure that will save money throughout the project's service life. In addition, high-performance insulated sandwich walls from County Prestress are extremely resistant to weather and wear, offering structural integrity that will endure for decades to come.

To learn more about County Prestress' Insulated Wall Panels and find out if they are right for your next project, contact our team at (708) 562-7700.



//

The concrete wall panels' thermal mass effectively stores and releases heat, resulting in an energy-efficient structure that will save money throughout the project's service life.

//