

Insulated Wall Panels

Manufactured in the USA by



Insulated Wall Panels



Insulated Wall Panels

High Performance Wall Panels for Distribution Warehouses and Manufacturing Buildings

Insulated wall panels are a structural, load bearing, insulated building envelope system that proves efficient and economical for large-scale commercial and industrial projects. Our PCI-certified production facilities are equipped to produce higher volumes of product to meet challenging construction schedules and help our customers achieve greater cost savings. County Prestress & Precast manufactures prestressed wall panels up to 15' wide and 65' long with greater depth for enhanced R-value.



Insulated Wall Panels



Our Insulated Wall Panels

- Meet project specifications and applicable building codes
- Lower life cycle cost
- Offer high performance strength and reliable durability
- Minimize site disturbance
- Achieve specified R-Value
- Resist fire and wind damage
- Reduce maintenance
- Increase design flexibility



County Prestress & Precast's production facilities are PCI-Certified.

Design and Engineering Experience

Our experienced Engineering Team will partner with you from the design to the coordination of production, delivery, and erection schedules. We work with you to prepare submittal drawings that ensure you get the safest and most reliable and aesthetically pleasing product.

Your Full-Service Partner

Construction professionals rely on County Prestress & Precast to support them through every phase of construction, utilizing the highest quality prestress products. Our team delivers satisfactory results with extensive quality assurance testing. Rely on us to make the difficult projects simple.

Insulated Wall Panels

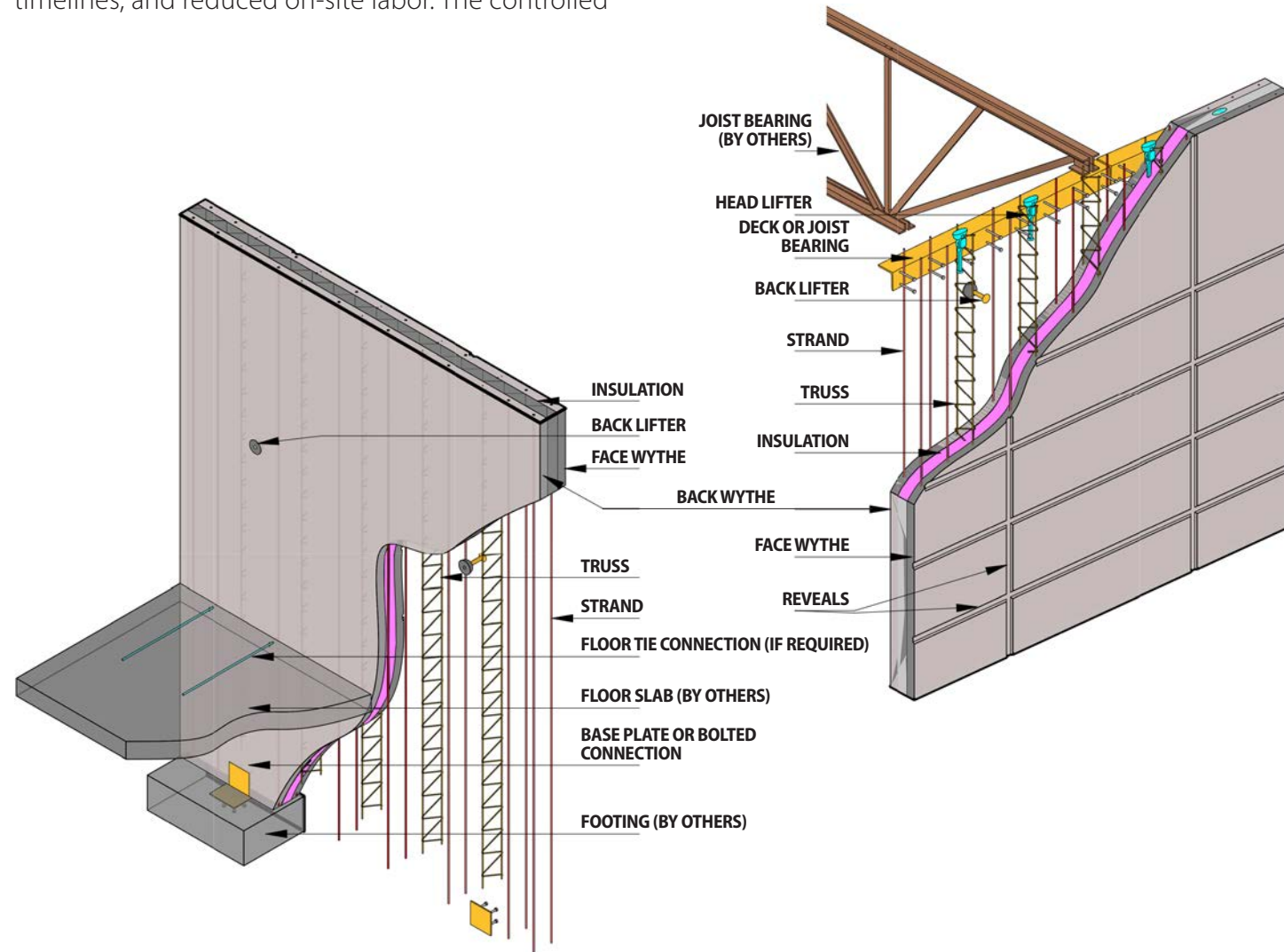
Prestressed wall panels are commonly used in building construction as load-bearing walls, cladding panels, etc.

These panels are manufactured by pouring concrete into molds or forms, which are designed according to the required specifications and dimensions. The concrete cures in the controlled environment of the factory, ensuring high quality and consistency. Reinforcement, such as rebar or mesh, may be added to enhance the panel's strength.

Insulated wall panels offer several advantages in construction projects. They can be produced in large quantities, ensuring faster construction timelines, and reduced on-site labor. The controlled

manufacturing environment also allows for better quality control, resulting in consistent and high-quality panels. Additionally, prestressed wall panels can be designed with various architectural finishes, textures, or patterns to meet specific aesthetic requirements.

County Prestress & Precast's Insulated Wall Panels provide a versatile and efficient solution for construction projects, offering time and cost savings while maintaining structural integrity and design flexibility.



Insulated Wall Panels

Expanded Polystyrene Insulation (EPS) is lightweight closed cell, rigid insulation formed by the expansion of polystyrene beads in a closed mold. The insulation has an excellent long-term thermal and moisture resistance.

EPS meets or exceeds ASTM C578 specifications. EPS is UL listed, and reduces air infiltration.

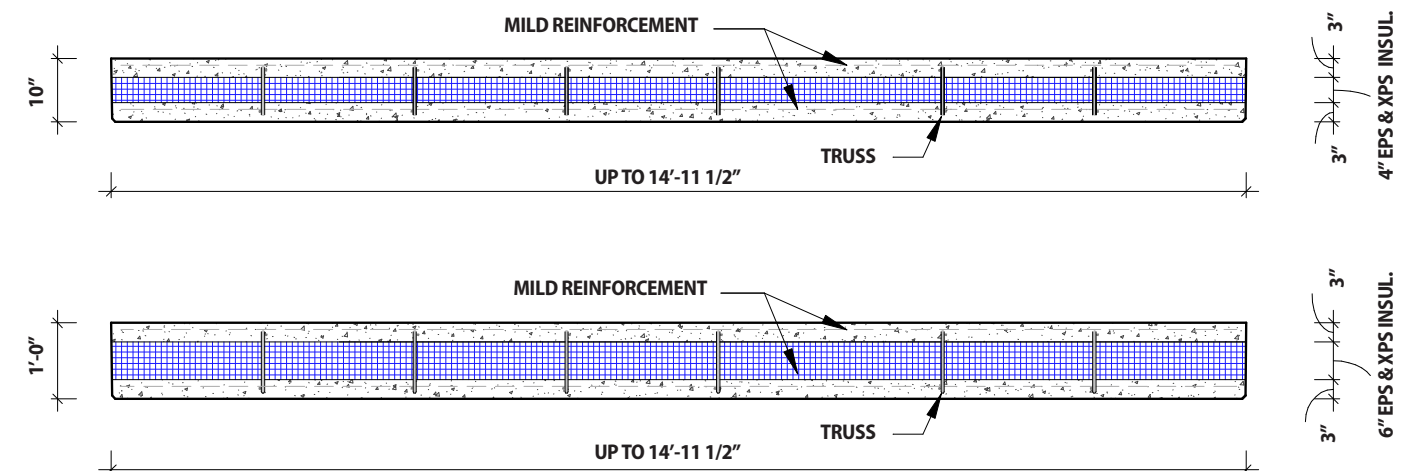
10"-thick walls with a 4" EPS insulation or 12"-thick walls with a 6" EPS insulation						
The R-Value is based on the location of the insulation. Solid areas will be required due to structural connections such as panel-to-panel, joist/deck bearing, etc.						
ASTM C578 Type 10"/4" & 12"/6"	Type XI	Type I	Type VIII	Type II	Type IX	Type XIV
Density, Minimum (PCF) 10"/4" & 12"/6"	0.70	0.90	1.15	1.35	1.80	2.40
Thermal Resistance at 25°F (per inch) 10"/4" & 12"/6"	3.45	4.35	4.54	4.76	5.00	4.80
R-Value of the insulation/concrete 10"/4"	15.10	18.70	19.46	20.34	21.30	20.50
R-Value of the insulation/concrete 12"/6"	22.00	27.40	28.54	29.86	31.30	30.10

Extruded Polystyrene (XPS) Insulation. The insulation has an excellent long term thermal and moisture resistance.

The proprietary HYDROVAC manufacturing process ensures a consistent closed-cell structure that is free of voids – keeping moisture out while delivering an R-Value of 5.60 per inch (based on 25° F) of thickness. Unlike other rigid foam insulations, testing proves insulation maintains its R-Value even when exposed to standing water, wet soil and more.

Available in compressive strengths from 15 to 100 psi and easy to handle on a variety of job sites across all climate zones, FOAMULAR® stands up to your most demanding applications for both above and below grade residential and commercial applications.

10"-thick walls with a 4" XPS insulation and 12"-thick walls with a 6" XPS insulation	
The R-Value is based on the location of the insulation. Solid areas will be required due to structural connections such as panel-to-panel, joist/deck bearing, etc.	
Specification Reference	Foamular 150, XPS
R-Value for 10" thick panel with a 4" XPS	23.70
R-Value for 12" thick panel with a 6" XPS	34.90



Insulated Wall Panels

County Prestress & Precast is headquartered in Westmont, Illinois and Astatula, Florida, and supplies concrete construction products throughout the Midwest and Southeastern United States, including Alabama, Florida, Georgia, Illinois, Indiana, Iowa, Kentucky, Minnesota, North Carolina, Ohio, South Carolina, Tennessee, and Wisconsin.

