



# SENTINEL

## SEALED TECHNOLOGY™

Factory-Sealed. Expertly Crafted. Protection You Can Trust.

Setting the standard in durability and surface defense, Sentinel Sealed Technology™ combines modern engineering with time-tested European innovation. Achieve **maximum stain resistance, surface protection, and long-lasting color.** Unlike field-applied sealers or single-layer primers, County Materials has crafted a hybrid paver manufacturing system that bonds two protective layers—a factory-applied penetrating primer and sealer—to the pavers' surface. The result is an ultra-smooth finish and refined texture—an ideal solution for pool decks, patios, and other barefoot-friendly spaces. Sentinel integrates concrete's inherent durability with an engineered protective seal designed to withstand life's greatest moments and inevitable messes.



### BENEFITS:

- Maximum stain resistance
- Surface protection
- Long-lasting color
- Uniform factory seal
- Deeper, richer color
- Ultra-smooth finish
- UV protection
- Barefoot-friendly
- UV protection
- Slip resistance
- Fade resistance
- Reduced efflorescence
- Reduced poly-haze
- Protection against deicing salts
- Sustainable strength
- Trust that your investment is protected for 7-10 years before routine sealant application is needed

### BUILT TO WITHSTAND:

- Stains from mud, dirt, grease, oil, acid, red wine, mustard, tree sap, and other debris
- Weathering
- UV fading
- Efflorescence and poly-haze
- Everyday wear and tear



**DISCOVER**  
more about this product



COUNTY MATERIALS CORPORATION



**SENTINEL**  
SEALED TECHNOLOGY™

Sentinel Sealed Technology™  
©2025 County Materials Corporation | 1574112874\_0425

**(800) 242-7733**  
**countymaterials.com**

Experience the **Sentinel Sealed Technology™**  
advantage with these select County Materials pavers and colors

## DISCOVER

SIZES: GRAND, GRAND XL



VISION



ENLIGHTEN



TIMELESS



ALLURE



MAJESTIC

### GRAND

EACH PALLET LAYER INCLUDES ALL SIZES.

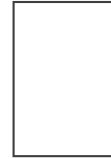
8 x 16 IN  
2 3/4" HEIGHT



16 x 16 IN  
2 3/4" HEIGHT



16 x 24 IN  
2 3/4" HEIGHT



### GRAND XL

SOLD ON INDIVIDUAL PALLETS.

16 x 32 IN  
2 3/4" HEIGHT



**DIMENSIONALLY**  
COMPATIBLE



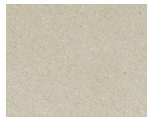
**GENESIS**  
FACE-MIX TECHNOLOGY.



**SENTINEL**  
SEALED TECHNOLOGY.

## ELEMENTS

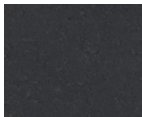
SIZES: 4X8, 8X16



VISION



BECKON



REFLECTION

### 4X8

EACH SIZE IS SOLD  
ON INDIVIDUAL  
PALLETS.

4 x 8 IN  
2 3/4" HEIGHT



### 8X16

EACH SIZE IS SOLD  
ON INDIVIDUAL  
PALLETS.

8 x 16 IN  
2 3/4" HEIGHT



**DIMENSIONALLY**  
COMPATIBLE



**GENESIS**  
FACE-MIX TECHNOLOGY.



**SENTINEL**  
SEALED TECHNOLOGY.

The color photos shown in this brochure were prepared with careful attention to accuracy. However, colors shown may vary from actual hues and should only be used as a guide. Refer to actual product samples for final color selection. Because concrete units are manufactured with high quality, naturally-mined aggregates and materials, variations in color or shading should be expected in products that are manufactured at different times and in units having different shapes. This color or shading variation is acceptable in the industry.



**COUNTY**  
MATERIALS CORPORATION



**Proud to be American based  
and American made since 1946**

