

SKYLANDS

CONCRETE DECK PAVERS

COUNTY MATERIALS CORPORATION

SKYLANDS

SKYLANDS™ Concrete Deck Pavers are used to create inviting outdoor living spaces in areas otherwise unusable. Using pedestals, deck pavers turn pitched or uneven surfaces into functional living areas.



Genesis
Face-Mix

COLORS

Colors shown may vary from actual hues.

SOLID



VISION*



BECKON



DREAM*



REFLECTION*

BLENDED



INTENTION



PURPOSE



SERENITY



TIMELESS*



ALLURE



MAJESTIC*



EXALT

*Product color in-stock



SKYLANDS Concrete Deck Pavers in Dream

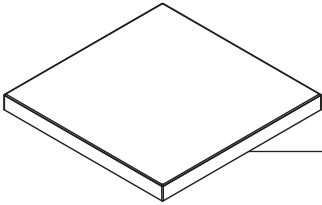
DISCOVER
more about this product



SKYLANDS Concrete Deck Pavers in Vision

SKYLANDS™ Concrete Deck Pavers

Units & Sizes

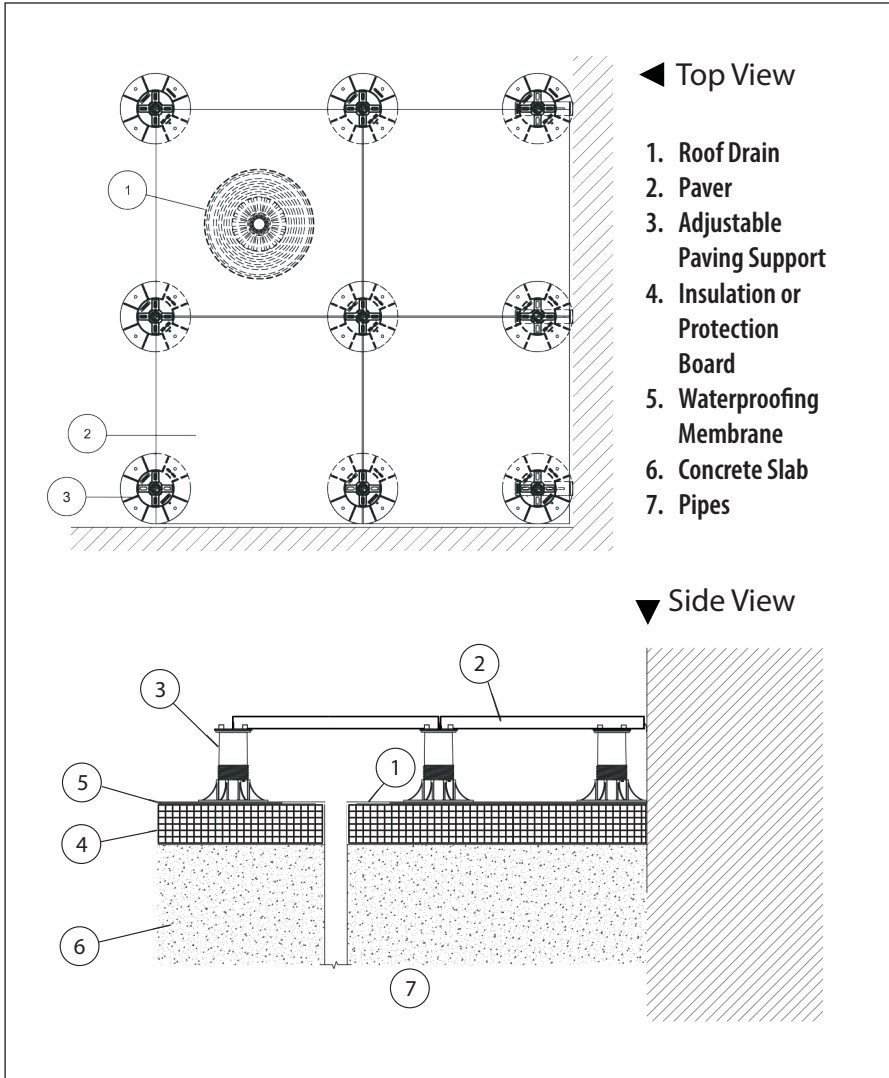


D x H x L (Nominal Size)
Inches

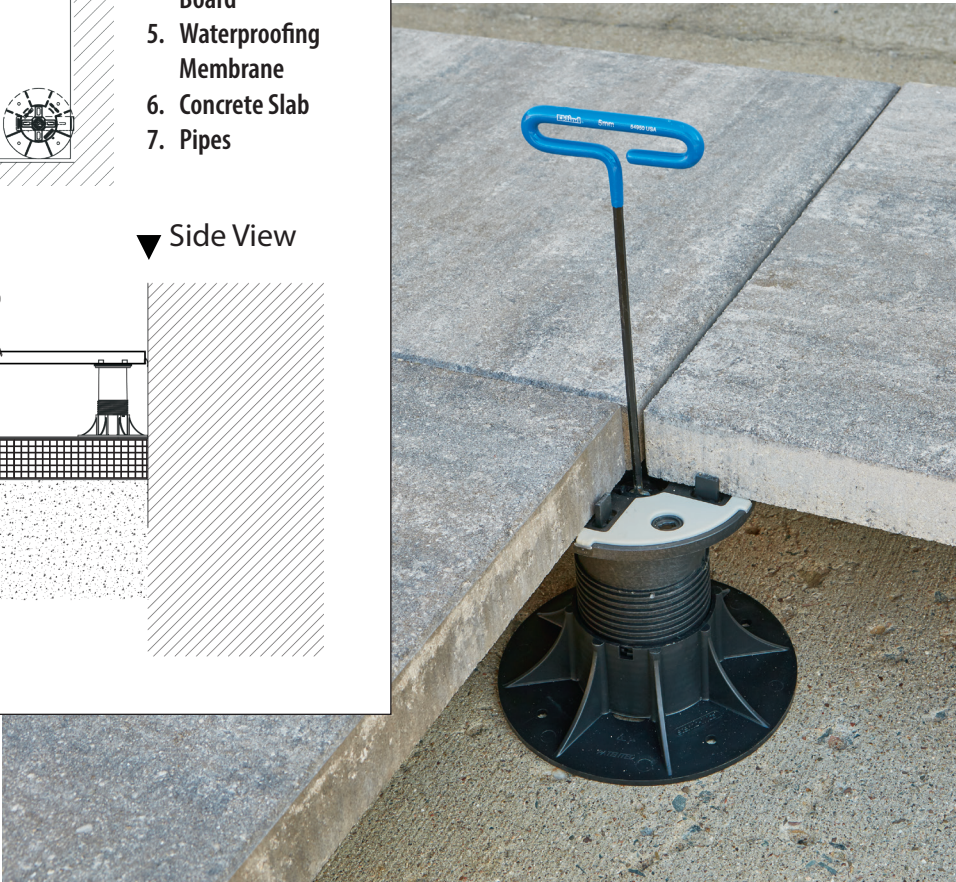
23 13/16 x 2 x 23 13/16

SF/Unit	Units/SF	SF/Pallet	Units/Pallet	Lbs/Pallet
4	.25	92	23	2300

Typical Pedestal Installation



Site layout and elevations are necessary to determine the quantity and heights of pedestals needed for each project. Please submit this information by contacting Customer Service at (800) 242-7733 or by emailing us at info@countymaterials.com.



The color photos shown in this catalog were prepared with careful attention to accuracy. However, colors shown may vary from actual hues and should only be used as a guide. Refer to actual product samples for final color selection. Because concrete units are manufactured with high quality, naturally-mined aggregates and materials, variations in color or shading should be expected in products that are manufactured at different times and in units having different shapes. This color or shading variation is acceptable in the industry.

Skylands™

Concrete Deck Pavers

Skylands™ Concrete Deck Pavers

©2025 County Materials Corporation | 1535164734_0225

(800) 242-7733

countymaterials.com



The color photos shown in this catalog were prepared with careful attention to accuracy. However, colors shown may vary from actual hues and should only be used as a guide. Refer to actual product samples for final color selection. Because concrete units are manufactured with high quality, naturally-mined aggregates and materials, variations in color or shading should be expected in products that are manufactured at different times and in units having different shapes. This color or shading variation is acceptable in the industry.



**Proud to be American based
and American made since 1946**

