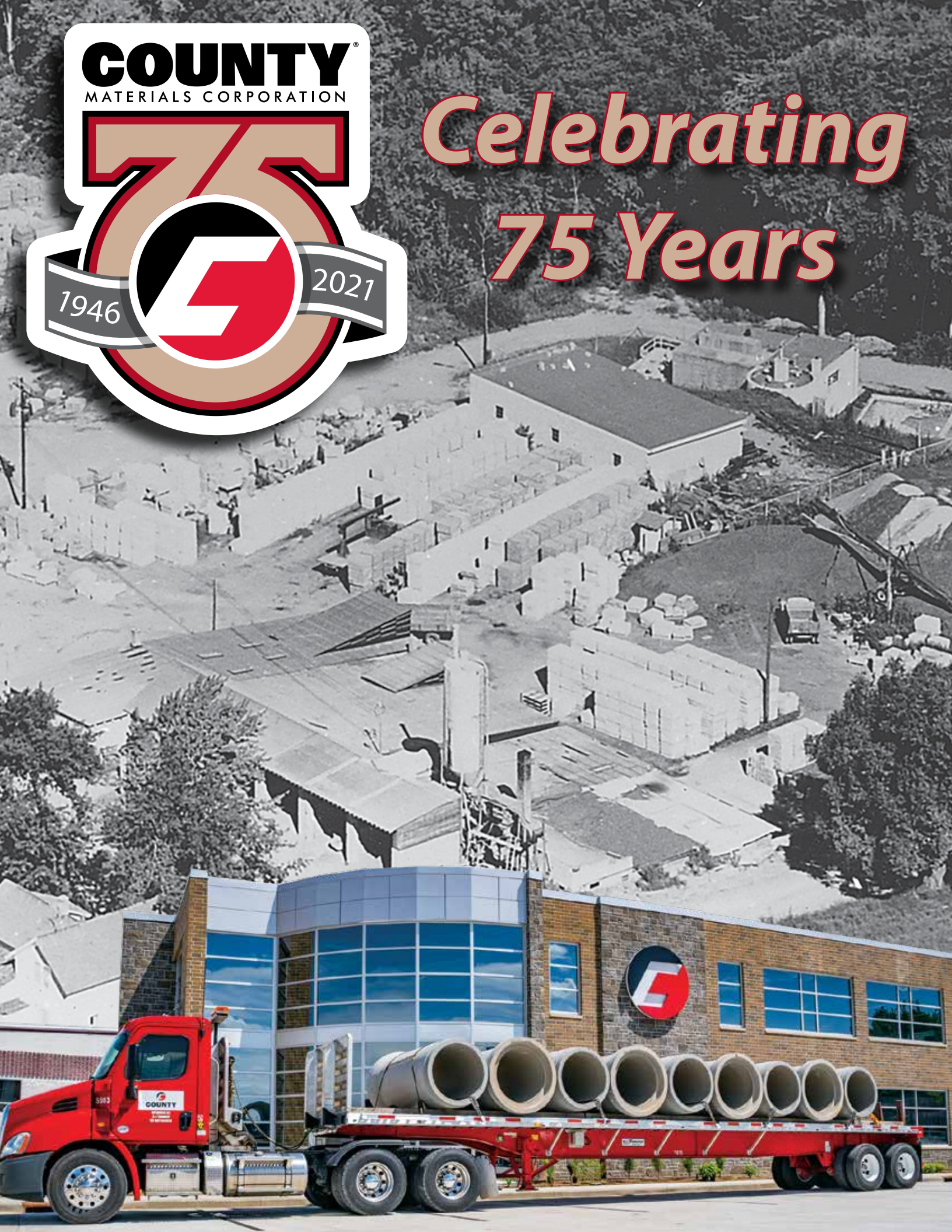


COUNTY[®]
MATERIALS CORPORATION

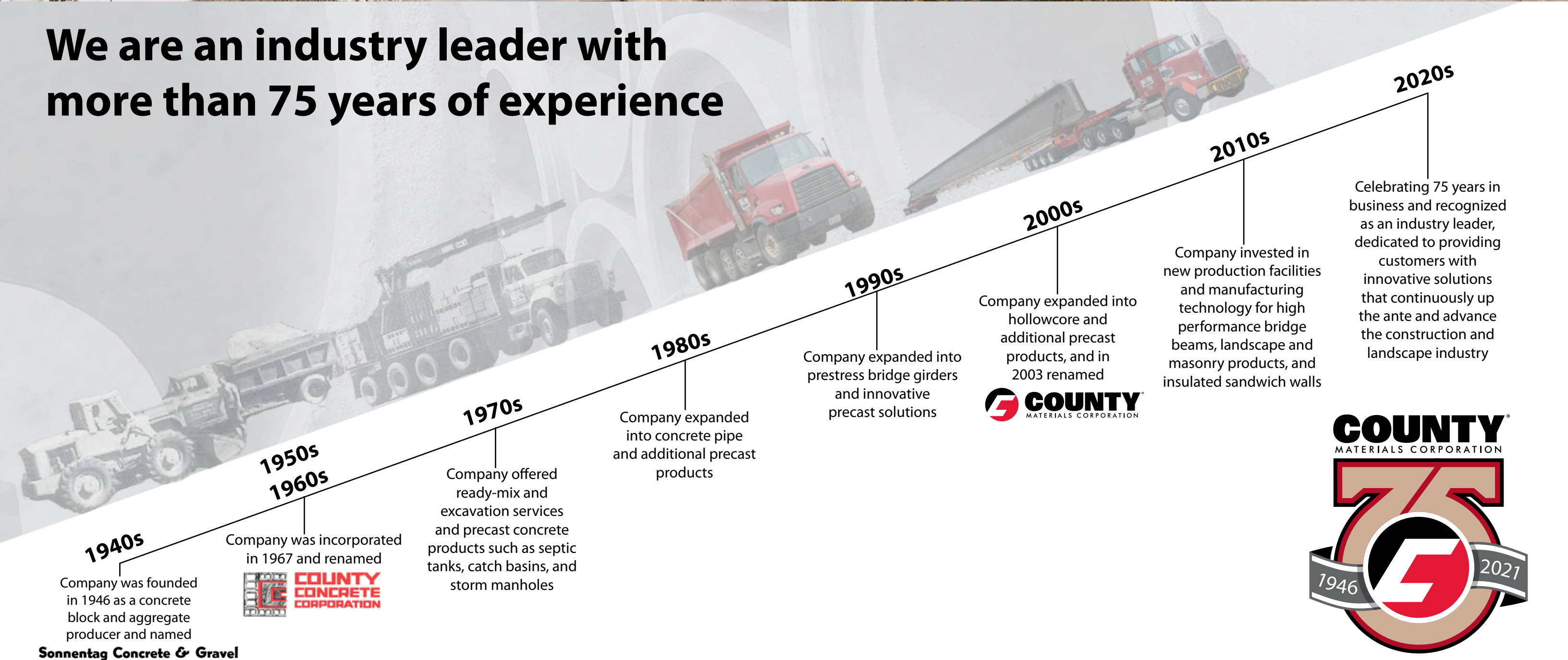


*Celebrating
75 Years*





We are an industry leader with more than 75 years of experience





1940s

Our story begins in 1946, when our company was founded as Sonnentag Concrete & Gravel. We hauled quarried materials to area farms and began establishing a reputation rooted in reliability and responsiveness. As local communities began to develop and grow, our company installed its first automated block machine and began manufacturing concrete masonry units for masons and builders in Marathon County, WI.

Company builds:
Marathon, WI block facility

Sonnentag Concrete & Gravel

1950s and 1960s

The demand for stronger, more efficient construction materials was on the rise as humble towns developed into bustling cities. Our company remained unwavering in its commitment to support this growth with reliable concrete products and unmatched service. In 1967, the company was incorporated and renamed County Concrete Corporation.



1970s

Through our strong values and hard work, we diversified into new product divisions and enhanced our manufacturing capabilities. County Concrete began offering ready-mix and excavation services. In 1972, we set the pace by manufacturing precast concrete products such as septic tanks, catch basins, and storm manholes. Additionally, we upgraded our block manufacturing capabilities with automatic batching and cement silos. These advancements helped the company expand its masonry product lines used to build schools, hospitals, farm structures, and homes.

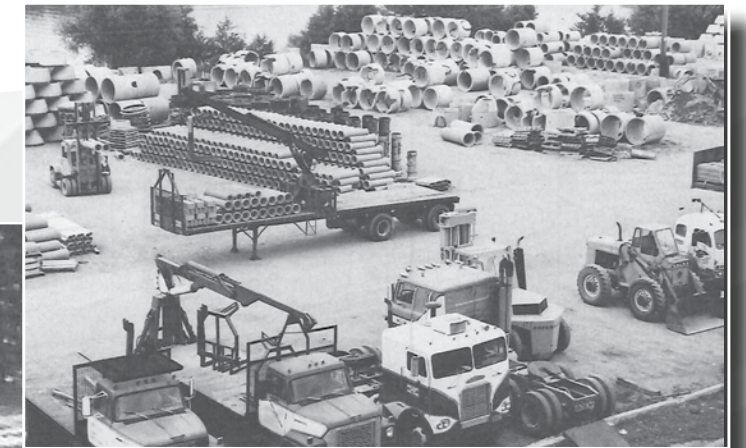
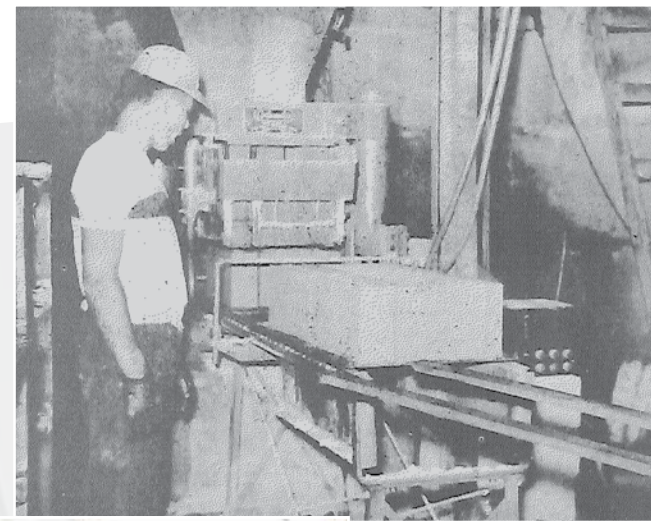
Company builds:
Marathon, WI precast and ready-mix facility
Weston, WI ready-mix facility

1980s

Our country and our company were growing. County Concrete expanded into concrete pipe and additional precast products. Our company found early success in this product division and it remains one of our largest to date. As our offerings diversified, we needed room to grow. County Concrete acquired its first pipe company in nearby Wausau, WI. A short year later, the company made a major move and built a pipe plant in Astatula, FL.

Company builds:
Rib Falls/Marathon, WI pipe facility
Astatula, FL pipe facility

Company purchases:
Wausau Concrete Co. (Wausau, WI)





1990s

Demand from larger commercial markets prompted our company to expand into prestressed bridge girders and provide innovative precast solutions. The industry took notice, when in 1999, County Concrete earned a Harry H. Edwards Industry Advancement Award for innovations in precast technology. These advancements were used to manufacture concrete segments to construct a 1 million square-foot underground library archive at the University of Minnesota. In addition to prestress plant purchases, additional acquisitions grew our geographic reach for block and ready-mix production.

Company builds:
Marathon, WI corporate office

Company purchases:
Fehr Concrete (Eau Claire and Rice Lake, WI)
4x Corporation Ready-Mix (Rothschild, WI)
Stevens Point Concrete (Stevens Point, WI)
Bladholm Brothers (Maple Grove, MN)
Mengel Companies (Stevens Point, WI
Marshfield, WI, and Wisconsin Rapids, WI)
Wimme Ready Mix & Block (Plover, WI)
Van Ess Concrete Block Company (Green Bay, WI)
Schultz Concrete Block (Appleton, WI)



2000s

Our company continued to push the limits through innovation and expansion. New Technology allowed our company to increase pipe and girder production and expand into hollowcore and additional specialty precast products. In 2003, we renamed to County Materials Corporation. The same year, our company earned its second Harry H. Edwards Industry Advancement Award for manufacturing 21,000 precast tunnel segments for the Minnesota Hiawatha Light Rail Tunnel in Minneapolis-St. Paul. Additional plant openings and acquisitions enabled our company to increase capacity and market share within the block, prestress, ready-mix, aggregates, pipe and precast product divisions.

Company builds:
Roberts, WI precast and prestress facilities

Company purchases:
Haessley & Haessley Block Co. (Nekoosa, WI)
Webster Concrete Block and Aggregates (Webster, WI)
Haefs Ready-Mix and Aggregates (La Crosse and Trempealeau, WI)
Milwaukee area locations of Wisconsin Brick & Block (Madison and Burlington, WI)
Hanz Contractors and Ready-Mix (Wausau, WI)
Milwaukee assets of Tews/Lafarge (Oak Creek, WI)
Hemstock Block and Prestress (La Crosse, WI)
Best Block (Menomonee Falls and Racine, WI)
Quality Block Products (Sussex and Hales Corners, WI)
Elston Block (Chicago, IL)
Heartland Concrete Pipe Products (Holmen, WI, Springfield and Mt. Vernon, IL)
Illinois Concrete Block, Pipe and Prestress (Champaign, IL)
Eastern Illinois Concrete (Charleston, IL)
Cornick Concrete (Pekin, IL)
Duffek Sand & Gravel (Antigo, Wittenberg, and Crandon, WI)
Madison Concrete Pipe (Madison, WI)
Egyptian Concrete (Salem, IL and Bonne Terre, MO)



2010s

As construction technologies evolved, our company led with innovation. Investments were made in new production facilities and manufacturing technology for high-performance bridge beams and landscape and masonry products. These advancements helped define County Materials as an industry leader and allowed the company to continuously push limits. In 2019, our company manufactured the largest prestressed bridge girders in the Midwest, with each girder weighing over 240,000 pounds and measuring 187 feet long. County Materials continued to grow in size through acquisitions. This growth increased the capacity of our block, ready-mix, precast and prestress divisions while allowing the company to expand and begin manufacturing concrete Insulated Sandwich Walls.

Company builds:
Janesville, WI block, landscape and prestress facilities

Company purchases:
American Concrete Pipe (Green Bay and Milwaukee, WI)
Wisconsin Concrete Products (Kiel, WI)
Winger Concrete (Tomahawk, Hazlehurst, Eagle River, WI)
Wilson Concrete (Davenport, IA)
Prestress Engineering Company (Blackstone, IL)
St. Louis Prestress (St. Louis, MO)
Independent Concrete Pipe (Maxwell and Indianapolis IN)
Musson Brothers, Inc. Ready-Mix Div. (Rhineland, WI)
Sanders Precast (Whitestown, IN)



2020s

County Materials celebrates 75 years in business and is recognized as an industry leader, dedicated to providing customers with innovative solutions that continuously up the ante and advance the construction and landscape industry.

Our Vision of Success, Stability and Support guides our strategies and decision-making to lead us into the future.

Company builds:
Milwaukee, WI pipe production facility

Company purchases:
Illini Precast (Westmont, Lockport, and Marseilles, IL; Charlestown, IN; and Burlington, WI)
Melvin Companies Ready-Mix Div. (Abbotsford and Medford, WI)



Our Vision



COUNTY[®]

MATERIALS CORPORATION

