

DISCOVER  
more about this product



# Grand FUSION

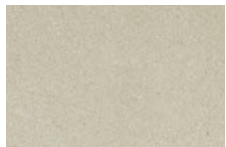
**Grand FUSION PAVERS™** bring a new level of interest and refinement to concrete pavers by combining two distinct textures into one module. Inspired by textures found in the home, Grand Fusion Pavers fuse the aesthetic of a structured surface, with alternating fields that replicate pebbled leather and striated textiles, and the enhanced performance of exterior concrete. Grand Fusion Pavers are larger in size and feature contemporary textures that provide a slip-resistant surface.



## Colors

Colors shown may vary from actual hues.

### SOLID



VISION



BECKON

### BLEND



INTENTION



EXALT

## Sizes and Dimensions

EACH PALLET LAYER INCLUDES ALL SIZES.

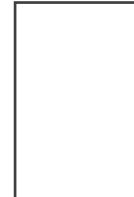
8 x 16 IN  
2 <sup>3</sup>/<sub>4</sub> HEIGHT



16 x 16 IN  
2 <sup>3</sup>/<sub>4</sub> HEIGHT



16 x 24 IN  
2 <sup>3</sup>/<sub>4</sub> HEIGHT



*The color photos shown in this catalog were prepared with careful attention to accuracy. However, colors shown may vary from actual hues and should only be used as a guide. Refer to actual product samples for final color selection. Because concrete units are manufactured with high quality, naturally-mined aggregates and materials, variations in color or shading should be expected in products that are manufactured at different times and in units having different shapes. This color or shading variation is acceptable in the industry.*





Grand Fusion Pavers in Exalt, Elements Paving Stones (4x8) in Vision and (8x16) in Reflection



Grand Fusion Pavers in Exalt, Elements Paving Stones (4x8) in Vision and Beckon



Grand Fusion Pavers in Intention