

DISCOVER
more about this product



H₂O PRO

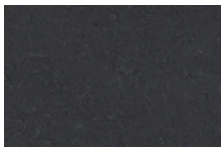
H₂O PRO® Pavers (Permeable Paving Units) are an effective storm water management solution on site. Their 3¹/₈" (80 mm) thickness withstands heavy low speed vehicular loads, making them a suitable option for driveways, walkways, and parking lots.



Color (4x8)

Colors shown may vary from actual hues.

SOLID

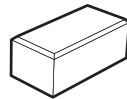


REFLECTION

Dimensions

SOLD ON
INDIVIDUAL PALLETS.

4 x 8 IN
3¹/₈ HEIGHT



Colors (All Sizes)

Colors shown may vary from actual hues.

BLENDED



TIMELESS

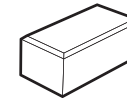


MAJESTIC

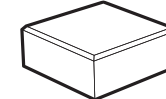
Sizes and Dimensions

SOLD ON INDIVIDUAL PALLETS.

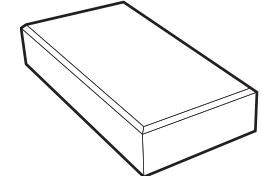
4 x 8 IN
3¹/₈ HEIGHT



8 x 8 IN
3¹/₈ HEIGHT



8 x 16 IN
3¹/₈ HEIGHT



H₂O Pro Pavers in Timeless



H₂O Pro Pavers in Timeless

The color photos shown in this catalog were prepared with careful attention to accuracy. However, colors shown may vary from actual hues and should only be used as a guide. Refer to actual product samples for final color selection. Because concrete units are manufactured with high quality, naturally-mined aggregates and materials, variations in color or shading should be expected in products that are manufactured at different times and in units having different shapes. This color or shading variation is acceptable in the industry.