

INFLUENCE

INFLUENCE PAVERS® feature crisp edges and a clean linear feel. Their five plank-style shapes minimize joint lines and lend themselves to invent interesting patterns using different color and texture combinations.



DISCOVER
more about this product

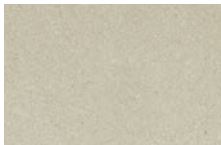


Influence Pavers in Exalt

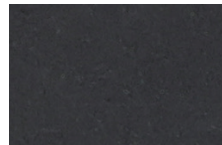
Colors

Colors shown may vary from actual hues.

SOLID



VISION



REFLECTION

BLENDED



MAJESTIC

Sizes and Dimensions

EACH PALLET LAYER INCLUDES ALL SIZES.

$5 \frac{3}{4} \times 9 \frac{11}{16}$ IN
3 $\frac{1}{8}$ HEIGHT



$5 \frac{3}{4} \times 11 \frac{5}{8}$ IN
3 $\frac{1}{8}$ HEIGHT



$5 \frac{3}{4} \times 13 \frac{5}{8}$ IN
3 $\frac{1}{8}$ HEIGHT



$5 \frac{3}{4} \times 17 \frac{1}{2}$ IN
3 $\frac{1}{8}$ HEIGHT



$5 \frac{3}{4} \times 19 \frac{1}{2}$ IN
3 $\frac{1}{8}$ HEIGHT



The color photos shown in this catalog were prepared with careful attention to accuracy. However, colors shown may vary from actual hues and should only be used as a guide. Refer to actual product samples for final color selection. Because concrete units are manufactured with high quality, naturally-mined aggregates and materials, variations in color or shading should be expected in products that are manufactured at different times and in units having different shapes. This color or shading variation is acceptable in the industry.



Influence Pavers in Majestic



Influence Pavers in Majestic



Influence Pavers in Majestic

Aspect Ratop Disclaimer: County Materials unit pavers "slab(s)" do not meet aspect ratio for vehicular application, as defined by CMHA standards. It is the responsibility and discretion of Buyer, Owner, Contractor, Architect, or Engineer to determine whether these unit pavers "slab(s)" are suitable for the specific project. County Materials recommends consulting with a qualified professional to assess the suitability for the project. County Materials Corporation accepts no responsibility or liability for the use of unit paver "slab(s)" in a vehicular application.