



PRODUCTS | RETAINING WALLS

# MagnumStone

**MagnumStone® RETAINING WALL SYSTEM** utilizes extenders to replace geogrid reinforcements by using a tongue-and-groove concrete system to meet or exceed the demands of engineers. This system reduces the massive footprint of traditional cantilevered gravity retaining walls and gives developers and owners greater use of land above the wall.

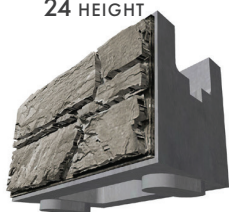


*Available in Gray as a standard color. Custom staining may be done onsite by an installer.*



## Sizes and Dimensions

**Standard**  
(Front finish)  
24 x 48 IN  
24 HEIGHT



**Standard Base**  
(Front finish)  
24 x 48 IN  
24 HEIGHT



**Standard Top**  
(Front finish)  
24 x 48 IN  
24 HEIGHT



**Half High**  
(Front finish)  
23 x 48 IN  
12 HEIGHT



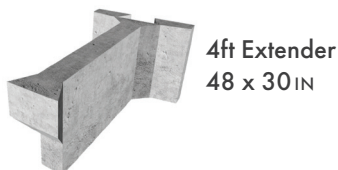
**Half High Base**  
(Front finish)  
23 x 48 IN  
12 HEIGHT



**Half High Top**  
(Front finish)  
23 x 48 IN  
12 HEIGHT



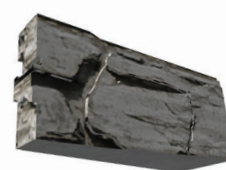
**2ft Extender**  
24 x 30 IN



**4ft Extender**  
48 x 30 IN



**Corner / End**  
(Side and Front finish)  
8 x 2-4 IN  
24 HEIGHT



**Half Corner / End**  
(Side and Front finish)  
9 x 3-4 IN  
12 HEIGHT



**Step / Cap**  
(Side and Front finish)  
24 x 48 IN  
6 HEIGHT

*The color photos shown were prepared with careful attention to accuracy. However, colors shown may vary from actual hues and should only be used as a guide. Refer to actual product samples for final color selection. Because concrete units are manufactured with high quality, naturally-mined aggregates and materials, variations in color or shading should be expected in products that are manufactured at different times and in units having different shapes. This color or shading variation is acceptable in the industry.*





MagnumStone RETAINING WALL SYSTEM

LEARN MORE



MagnumStone RETAINING WALL SYSTEM



MagnumStone RETAINING WALL SYSTEM