

# PASSAGEWAYS

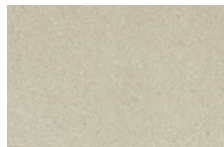
**Passageways® Step Units** feature a natural textured face, clean lines, and a large modular shape, Passageways Step Units enhance installation and offer endless applications. Add steps to raised patios, front entrances, terraced walks, and steep slopes.



## Colors

Colors shown may vary from actual hues.

### SOLID



VISION

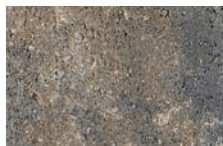


BECKON



REFLECTION

### BLENDED



TIMELESS

### GLOW PATH TECHNOLOGY™



VISION



REFLECTION

*Glow Path Technology™ is owned by Glow Path Pavers*

*For more information see pages 64-65*

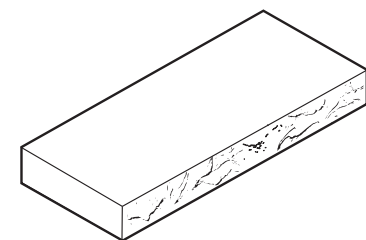
**DISCOVER**  
more about this product



Passageways Step Units in VISION

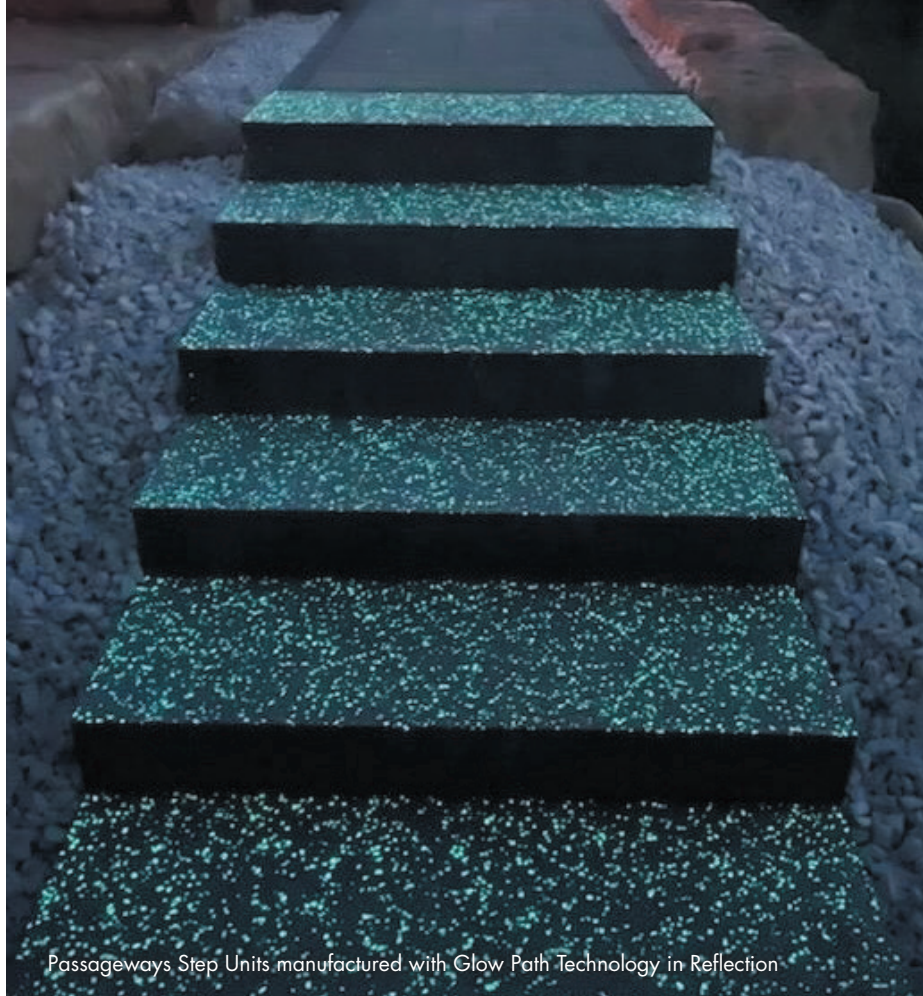
## Dimensions

20 x 48 IN  
6 HEIGHT

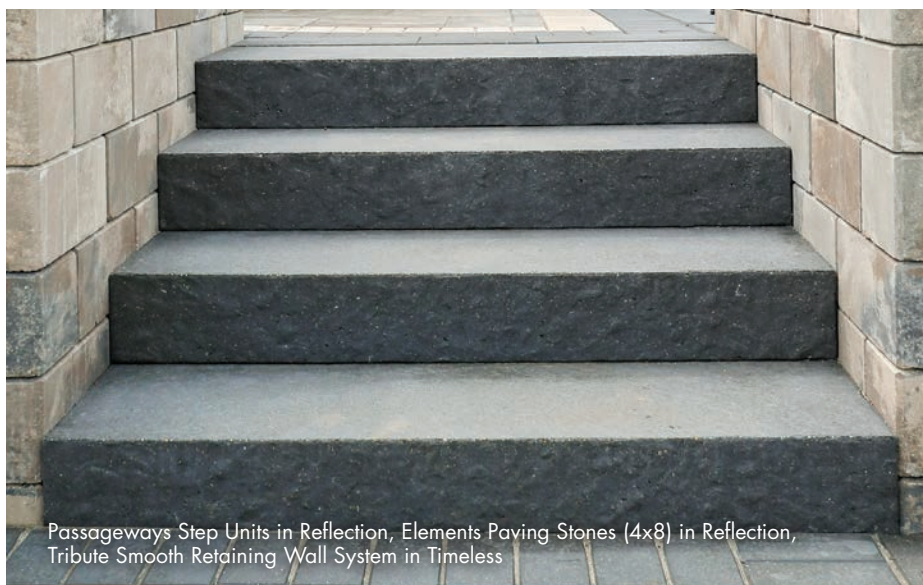


*The color photos shown in this catalog were prepared with careful attention to accuracy. However, colors shown may vary from actual hues and should only be used as a guide. Refer to actual product samples for final color selection. Because concrete units are manufactured with high quality, naturally-mined aggregates and materials, variations in color or shading should be expected in products that are manufactured at different times and in units having different shapes. This color or shading variation is acceptable in the industry.*

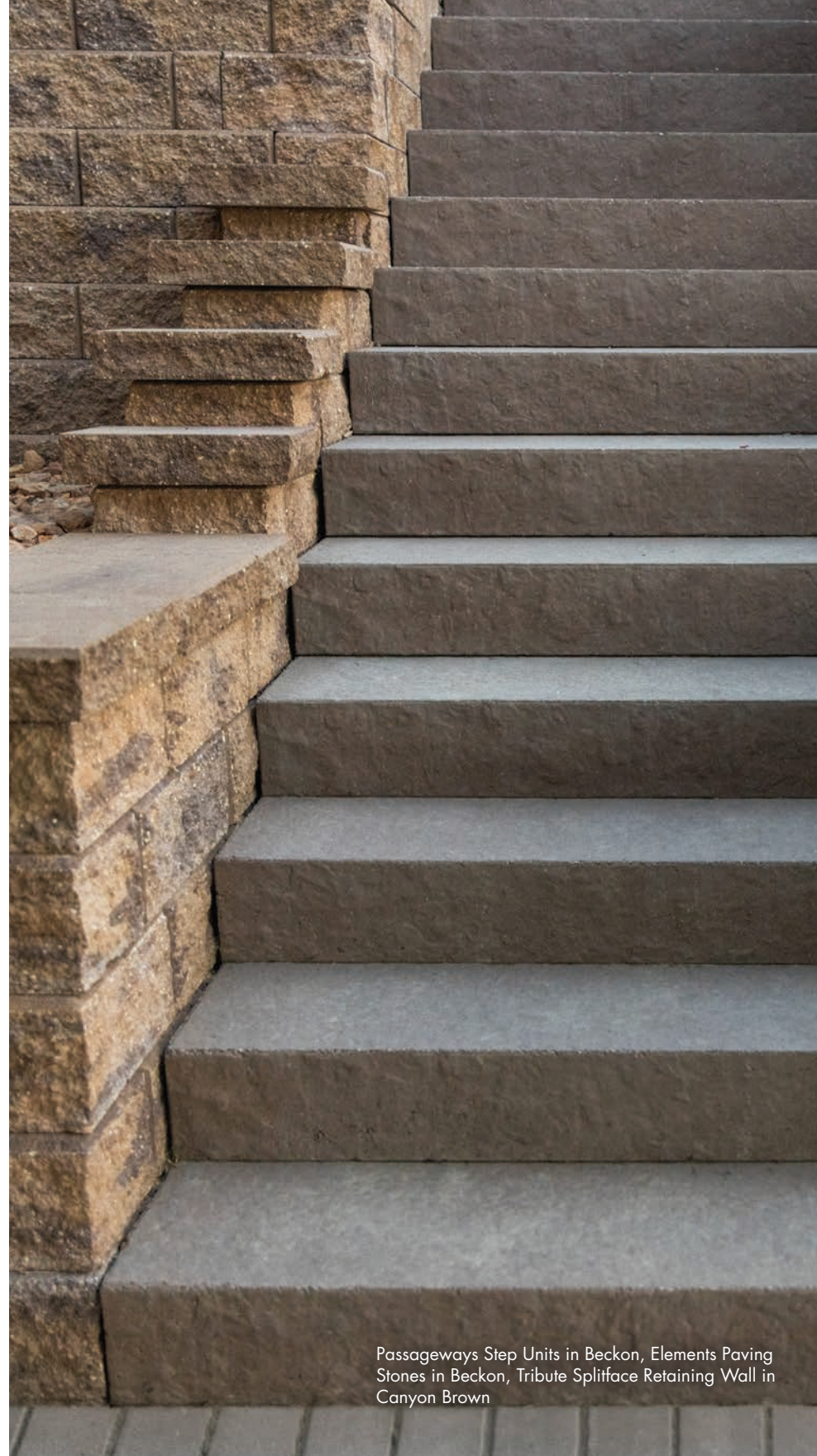




Passageways Step Units manufactured with Glow Path Technology in Reflection



Passageways Step Units in Reflection, Elements Paving Stones (4x8) in Reflection, Tribute Smooth Retaining Wall System in Timeless



Passageways Step Units in Beckon, Elements Paving Stones in Beckon, Tribute Splitface Retaining Wall in Canyon Brown



